



BROOME STREET PATTERNS

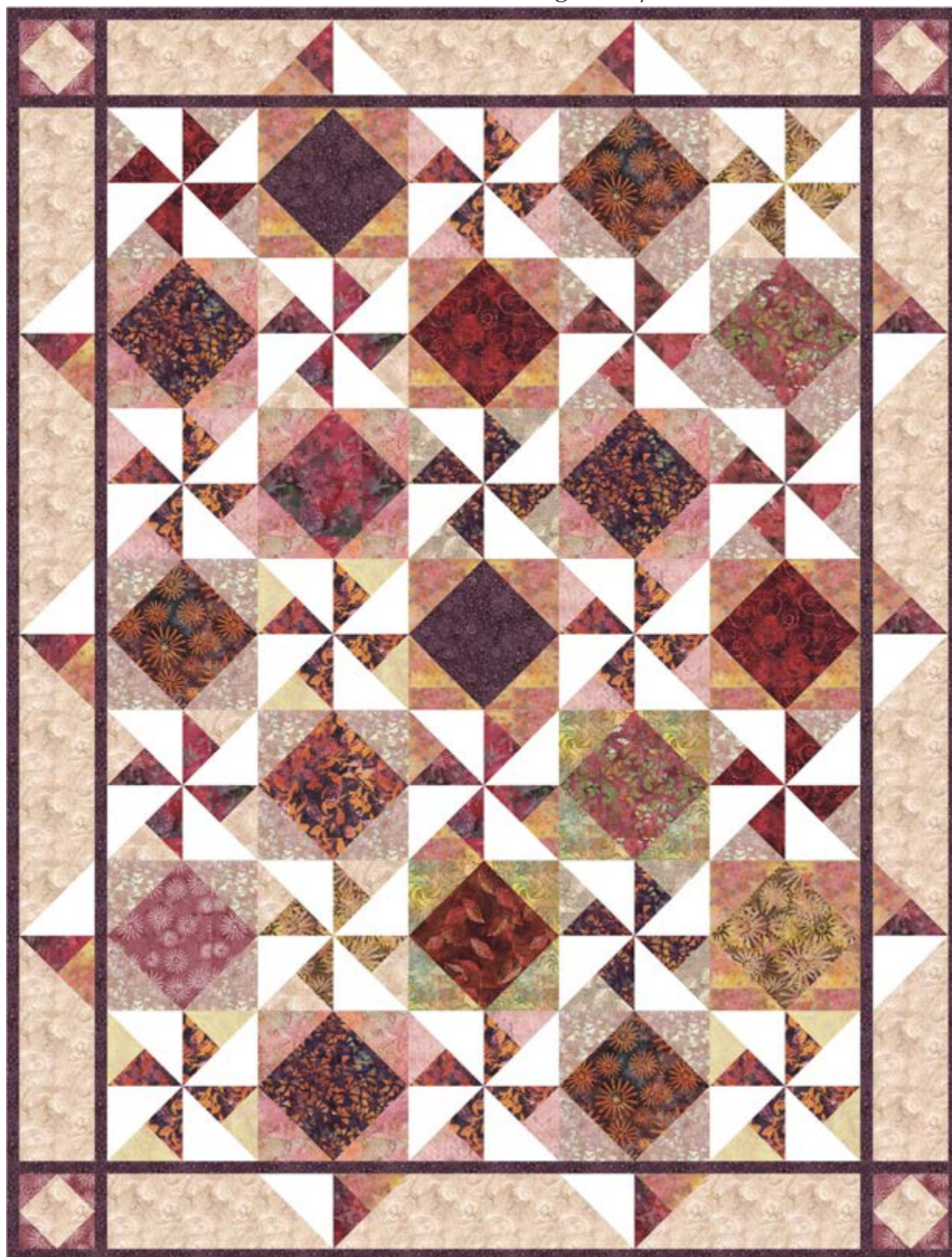


Tonga Passion Fruit

by Judy and Judel Niemeyer

Stroll in Venice

Designed by Denise Russell



Finished quilt size: 76½" x 100½"

Fabric Requirements:

$\frac{1}{3}$ yard each:

Tonga-B4394 Punch
Tonga-B4611 Plum
Tonga-B4391 Red

$\frac{1}{4}$ yard each:

Tonga-B4162 Clay
Tonga-B4012 Lipstick
Tonga-B4390 Blush
Tonga-B4928 Straw

$\frac{1}{2}$ yard each:

Tonga-B4394 Passion
Tonga-B4582 Wine
Tonga-B4929 Summer
Tonga-B4392 Fire
Tonga-B4015 Pink
Tonga-B4591 Peony

$\frac{7}{8}$ yard each:

Tonga-B4021 Fuchsia
Tonga-B4394 Rose
Tonga-B4019 Sorbet

$\frac{5}{8}$ yard Tonga-B4001 Ruby

$2\frac{1}{2}$ yards Soho-White

$1\frac{3}{4}$ yards Tonga-B4897 Purple (includes binding)

2 yards Tonga-B4928 Cream

$7\frac{1}{4}$ yards Tonga backing fabric of your choice

Other supplies:

86" x 116" batting
Strip Tube Ruler™ (available at www.cozyquilt.com)

Cutting

From Tonga-B4394 Punch:

- Cut two 9" squares.

From Tonga-B4611 Plum:

- Cut three 9" squares.

From Tonga-B4391 Red:

- Cut one 9" square.

From Tonga-B4162 Clay:

- Cut one $6\frac{7}{8}$ " x WOF strip. Sub-cut four $6\frac{7}{8}$ " squares.

From Tonga-B4012 Lipstick:

- Cut two $3\frac{1}{4}$ " x WOF strips.

From Tonga-B4390 Blush:

- Cut two $3\frac{1}{4}$ " x WOF strips.

From Tonga-B4928 Straw:

- Cut two $3\frac{1}{4}$ " x WOF strips.

From Tonga-B4394 Passion:

- Cut two $3\frac{1}{4}$ " x WOF strips.
- Cut three 9" squares.

From Tonga-B4582 Wine:

- Cut two $3\frac{1}{4}$ " x WOF strips.
- Cut two 9" squares.

From Tonga-B4929 Summer:

- Cut two $6\frac{7}{8}$ " x WOF strips. Sub-cut eight $6\frac{7}{8}$ " squares.

From Tonga-B4392 Fire:

- Cut one 9" square.
- Cut two $3\frac{1}{4}$ " x WOF strips.

From Tonga-B4015 Pink:

- Cut four $3\frac{1}{4}$ " x WOF strips.

From Tonga-B4591 Peony:

- Cut one 9" square.
- Cut one $3\frac{7}{8}$ " x WOF strip. Sub-cut eight $3\frac{7}{8}$ " squares.

From Tonga-B4021 Fuchsia:

- Cut one 9" square.
- Cut six $3\frac{1}{4}$ " x WOF strips.

From Tonga-B4394 Rose:

- Cut two $6\frac{7}{8}$ " x WOF strips. Sub-cut ten $6\frac{7}{8}$ " squares.
- Cut four $3\frac{1}{4}$ " x WOF strips.

From Tonga-B4019 Sorbet:

- Cut two $6\frac{7}{8}$ " x WOF strips. Sub-cut ten $6\frac{7}{8}$ " squares.
- Cut four $3\frac{1}{4}$ " x WOF strips.

From Tonga-B4001 Ruby:

- Cut three $3\frac{1}{4}$ " x WOF strips.
- Cut one 9" square.

From Soho-White:

- Cut six $3\frac{1}{2}$ " x WOF strips. Sub-cut seventy-two $3\frac{1}{2}$ " squares.
- Cut seventeen $3\frac{1}{4}$ " x WOF strips.
- Cut two $5\frac{1}{2}$ " x WOF strips.

From Tonga-B4897 Purple:

- Cut two 9" squares.
- Cut twenty $1\frac{1}{2}$ " x WOF strips. Sub-cut eight $1\frac{1}{2}$ " x $6\frac{1}{2}$ " strips. Save the remainder for the narrow borders.
- Cut nine $2\frac{1}{2}$ " x WOF strips for binding.



Imagination... Passion... Creativity

From Tonga-B4928 Cream:

- Cut four 3¼" x WOF strips.
- Cut one 3½" x WOF strip. Sub-cut ten 3½" squares.
- Cut two 5½" x WOF strips.
- Cut three 12½" x WOF strips. Sub-cut fourteen 6½" x 12½" rectangles.
- Cut one 4¾" x WOF strip. Sub-cut four 4¾" squares.

Block Construction

All seam allowances are ¼" unless otherwise noted.

For ease of handling, stack and label patches and blocks by color combination.

Throughout this project use the 4" line of the Strip Tube Ruler for center blocks, and the 7" line of the ruler for border blocks.

Large Diamond in the Square blocks:

1. Match 9" squares and 6⅞" squares as follows. Each finished block requires two 6⅞" squares and one 9" square.

Three blocks each:

B4611 Plum/B4394 Rose
B4394 Passion/B4929 Summer

Two blocks each:

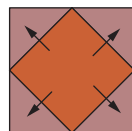
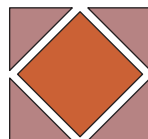
B4582 Wine/B4019 Sorbet
B4897 Purple/B4019 Sorbet

One block each:

B4394 Punch/B4394 Rose
B4001 Ruby/B4929 Summer
B4021 Fuchsia/B4394 Rose
B4394 Punch/B4162 Clay
B4591 Peony/B4394 Rose
B4391 Red/B4162 Clay
B4392 Fire/B4019 Sorbet

2. Cut two 6⅞" squares of same color in half once diagonally. Stitch one half to each side of the listed 9" square. Press. Make a total of

Fig. 1



**Large Diamond
in the Square Block**
Make 17.

seventeen 12½" blocks in the color combinations listed above. (figure 1)

Turnstile blocks:

HST=half-square triangle

3. Stitch together both long edges of the 3¼" x WOF strip pairs in the quantities listed below to make tubes.

Soho-White in combination with the following colors:

B4021 Fuchsia (three)	B4019 Sorbet
B4015 Pink (two)	B4582 Wine
B4394 Rose (two)	B4392 Fire
B4928 Cream (two)	B4012 Lipstick
B4001 Ruby	B4394 Passion
B4390 Blush	B4928 Straw

B4021 Fuchsia/B4015 Pink (two)

B4582 Wine/B4394 Rose

B4392 Fire/B4928 Cream

B4012 Lipstick/B4394 Rose

B4394 Passion/B4390 Blush

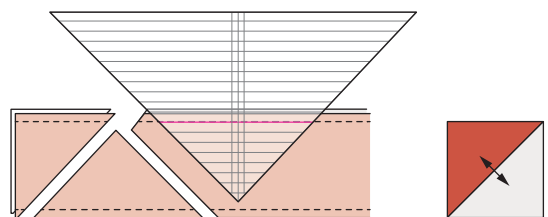
B4001 Ruby/B4019 Sorbet

B4001 Ruby/B4928 Cream

B4021 Fuchsia/B4928 Straw

4. To cut the HST, position 4" line of the Strip Tube Ruler on the bottom stitching line of a tube. Cut on both sides of the triangle. Turn ruler so 4" line is on the top stitching line and cut on both sides. Repeat along the length of the tube – each tube yields twelve HST. (figure 2) Trim off dog ears and press each unit open.

Fig. 2



5. Assemble a total of eighteen blocks referring to Figure 3 and in the following color combinations, noting that each block also uses four 3½" Soho-White squares (A) in combination with four each of the listed HST. The letter in parentheses indicates the fabric location within the block.

Make two each:

B4394 Rose/Soho-White (B)
B4582 Wine/B4394 Rose (C)
B4582 Wine/Soho-White (D)

B4928 Cream/Soho-White (B)
B4392 Fire/B4928 Cream (C)
B4392 Fire/Soho-White (D)

B4394 Rose/Soho-White (B)
B4012 Lipstick/B4394 Rose (C)
B4012 Lipstick/Soho-White (D)

B4390 Blush/Soho-White (B)
B4394 Passion/B4390 Blush (C)
B4394 Passion/Soho-White (D)

B4928 Cream/Soho-White (B)
B4001 Ruby/B4928 Cream (C)
B4001 Ruby/Soho-White (D)

Make four:

B4015 Pink/Soho-White (B)
B4021 Fuchsia/B4015 Pink (C)
B4021 Fuchsia/Soho-White (D)

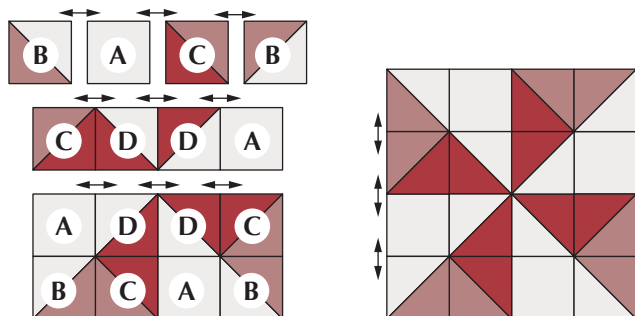
Make three:

B4928 Straw/Soho-White (B)
B4021 Fuchsia/B4928 Straw (C)
B4021 Fuchsia/Soho-White (D)

Make one:

B4019 Sorbet/Soho-White (B)
B4001 Ruby/B4019 Sorbet (C)
B4001 Ruby/Soho-White (D)

Fig. 3



Turnstile Block
Make 18.

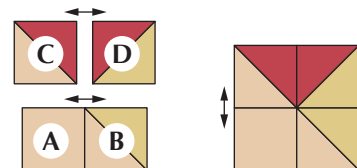
Four-X blocks:

6. With right sides together, stitch together both long edges of the following $3\frac{1}{4}$ " strip pairs: B4928 Cream/

B4019 Sorbet (B); B4928 Cream/B4001 Ruby (C); and B4019 Sorbet/B4001 Ruby (D). Following Step 4, cut the strips into HST.

7. To assemble the block, stitch one $3\frac{1}{2}$ " B4928 Cream square (A) to a (B). Press. Stitch a (C) to a (D). Press. Stitch the two rows together. (figure 4) Make a total of ten blocks.

Fig. 4

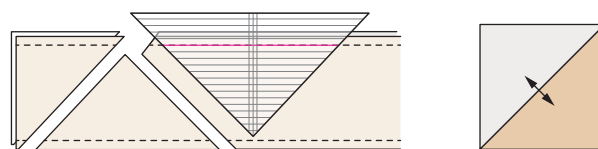


Four-X Block
Make 10.

Border HST Blocks:

8. With right sides together, stitch together both long sides of the $5\frac{1}{2}$ " x WOF Soho-White and B4928 Cream strips to create two tubes. Position the 7" line of the Strip Tube Ruler on the bottom stitching line of the first tube, cut on both sides of the triangle. Turn ruler so 7" line is on the top stitching line and cut on both sides. Repeat along the length of the tube – each tube yields six HST. Trim off dog ears and press each unit open. Make a total of ten blocks. (figure 5)

Fig. 5



Border HST Block
Make 10.

Corner Diamond in the Square blocks:

9. Cut two $3\frac{7}{8}$ " B4591 Peony squares once diagonally. Stitch one half to each side of a $4\frac{3}{4}$ " B4928 Cream square. Press. Repeat to make a total of four $6\frac{1}{2}$ " blocks.

Note: You will have extra HST leftover for another project.

Quilt Top Assembly

10. Follow the Quilt Assembly Diagram to lay out seven rows of five blocks each, alternating the Large Diamond in a Square blocks and Turnstile blocks. Stitch the blocks together in each row. Press seams in alternate directions for adjacent rows.



Imagination... Passion... Creativity

11. Sew the rows together in order, matching adjacent seams.

12. To make the inner border, sew eight 1½" x WOF B4897 Purple strips together end to end using diagonal seams. Stitch a border strip to each side of the quilt center and trim the extra length. Press seams toward the border. In the same manner, stitch one border to the top and another to the bottom.

13. Following the Quilt Assembly Diagram, stitch two 1½" x 6½" B4897 Purple strips, three 6½" x 12½" B4928 Cream rectangles, two B4928 Cream/Soho-White HST and two Four-X Blocks together. Press seams in one direction. Repeat to make another row. Noting the orientation, stitch one row to the top

and another to the bottom of the quilt center. Press seams toward border.

14. For side border rows, add a 1½" x 6½" strip B4897 Purple to one side of the Corner Diamond in the Square Blocks. Following the Quilt Assembly Diagram and noting the orientation, stitch together three Four-X Blocks, four 6½" x 12½" B4928 Cream rectangles, three B4928 Cream/Soho-White HST and two bordered Corner Diamond in the Square Blocks. Press the seams in one direction. Repeat to make a second row. Stitch one row to each side of the quilt, noting the orientation.

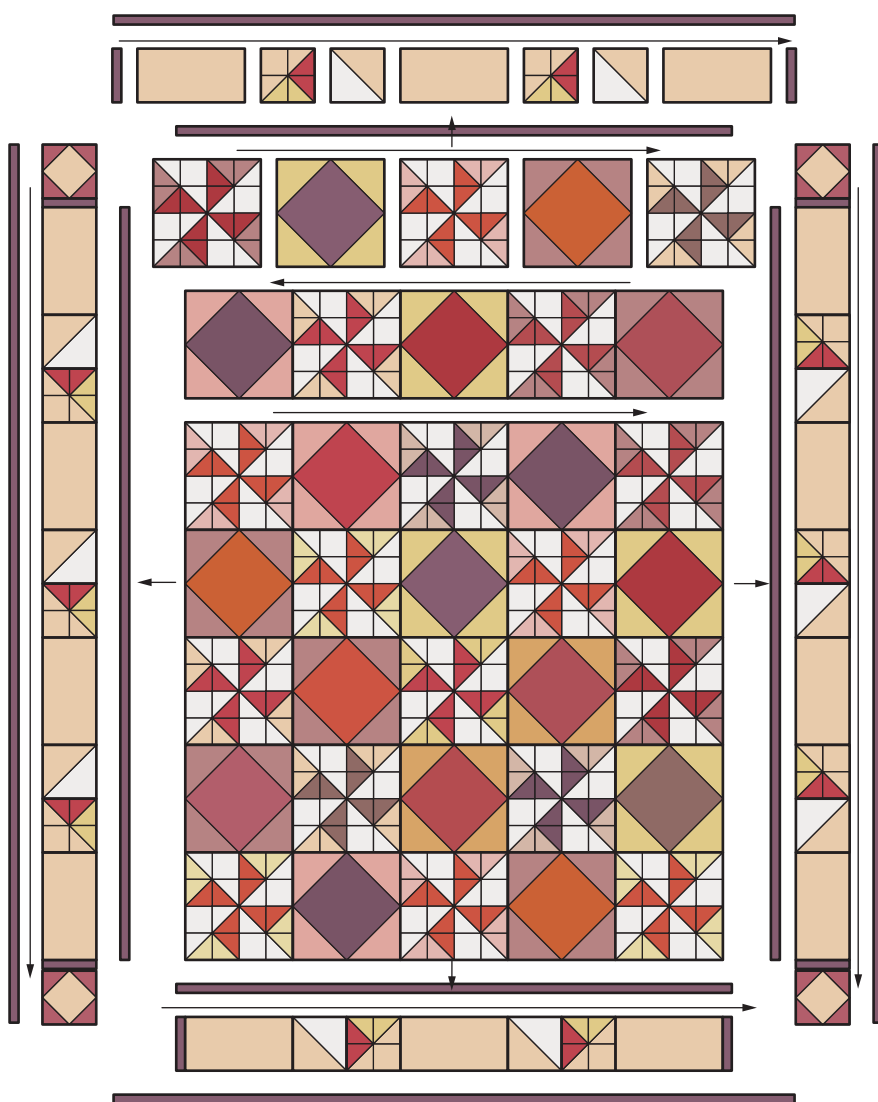
15. Stitch together the remaining 1½" x WOF B4897 Purple strips end to end using diagonal seams. Stitch one border to each side of the quilt top. Press seams toward the border. Stitch one border to the top and another to the bottom of the quilt top. Press seams toward the border.

Finishing

16. Layer the quilt top, batting and backing and quilt as desired.

17. Stitch the binding strips together end to end using diagonal seams. Fold and press the resulting long strip in half lengthwise with wrong sides together. Stitch to the quilt front, matching raw edges and mitering the corners.

18. Fold the binding to the quilt underside and hand-stitch the folded edge to the quilt back.



Quilt Assembly Diagram

Denise Russell
www.piecedbrain.com

©2016 Timeless Treasures www.ttfabrics.com
This pattern is for individual home use only. This pattern may not be reproduced for commercial purposes (i.e., may not be sold).