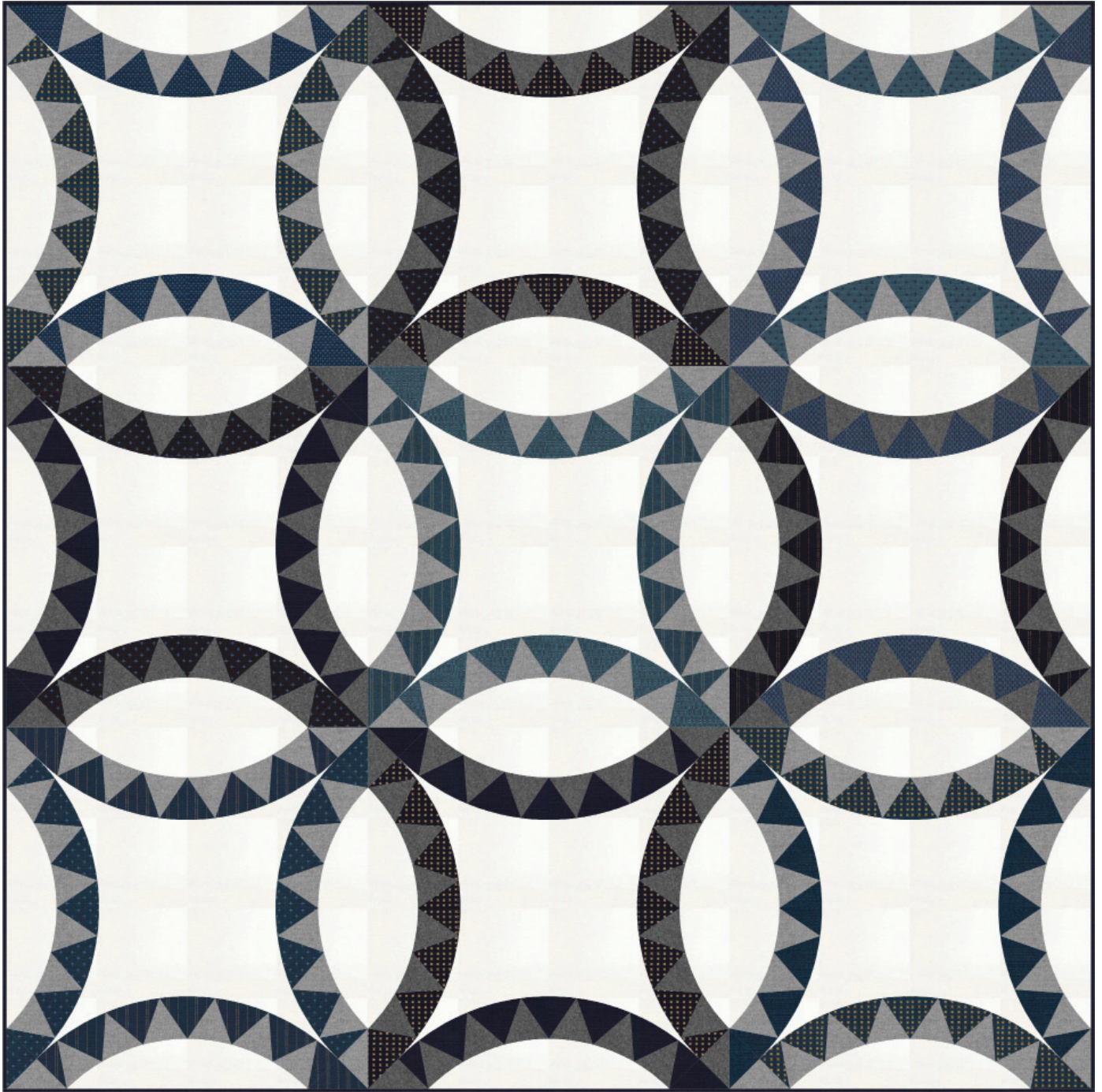


BLUE JEAN BABY

Designed by Robert Kaufman Fabrics
www.robertkaufman.com

Featuring **Indikón**



Finished quilt measures: 72" x 72"

Pattern Level: Advanced Expert











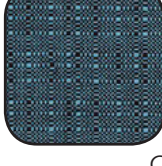
*"My skills are sharp, so I'm ready to
take on the hard stuff."*

ROBERTKAUFMAN
F A B R I C S

For questions about this pattern, please email Patterns@RobertKaufman.com.

Fabric and Supplies Needed

Fabric amounts based on yardage that is 42" wide.

Color	Fabric	Name/SKU	Yardage	Color	Fabric	Name/SKU	Yardage
	A	E014-1387 WHITE	4 yards		J	SRK-16718-62 INDIGO	1/4 yard
	B	E064-456 SHALE	1-1/4 yard		K	SRK-16719-67 DENIM	1/4 yard
	C	E064-1071 CHARCOAL	1 yard		L	SRK-16717-4 BLUE	1/4 yard
	D	SRK-16716-67 DENIM	1/4 yard		M	SRK-16717-62 INDIGO	1/4 yard
	E	SRK-16718-67 DENIM	1/4 yard		N	SRK-16717-67 DENIM	1/4 yard
	F	SRK-16716-62 INDIGO	1/4 yard		O	SRK-16720-67 DENIM	1/4 yard
	G	SRK-16719-62 INDIGO	1/4 yard		P	SRK-16720-62 INDIGO	1/4 yard
	H	SRK-16719-4 BLUE	1/4 yard		Q	SRK-16720-4 BLUE	1/4 yard
	I	SRK-16718-4 BLUE	1/4 yard	<div>You will also need: 4-1/2 yards for backing 2/3 yard for binding</div>			
Copyright 2017, Robert Kaufman For individual use only - Not for resale							

Notes Before You Begin

- Read through all of the instructions before beginning.
- All of the seam allowances are 1/4" unless otherwise noted.
- Press seam allowances open unless otherwise noted.
- Width of fabric (WOF) is equal to at least 42" wide.
- Right sides together has been abbreviated to RST.
- Remember to measure twice and cut once!

Notes Before You Begin

From Fabric A, cut:

nine of Template 6

thirty-six of Template 5

From Fabric B, cut:

twenty of Template 1

one hundred-twenty of Template 2

From Fabric C, cut:

sixteen of Template 1

ninety-six of Template 2

From each of Fabrics E, H, I, and K-Q, cut:

ten of Template 3

two of Template 4

two of Template 4-reversed

two of Template 1-reversed

From each of Fabrics D-G and J, cut:

twenty of Template 3

four of Template 4

four of Template 4-reversed

four of Template 1-reversed

From the Binding Fabric, cut:

eight 2-1/2" x WOF strips for binding

Assemble Block 1



Step 1: Gather:

one Fabric A/Template 6 piece
four Fabric A/Template 5 pieces

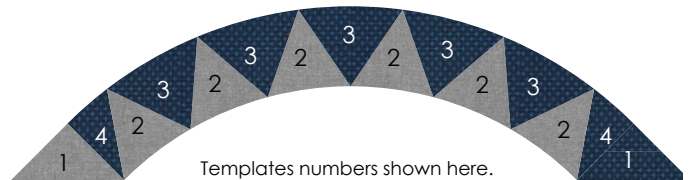
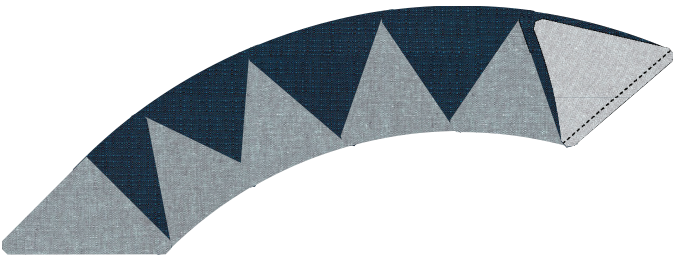
twenty-four Fabric B/Template 2 pieces
four Fabric B/Template 1 pieces

ten Fabric E/Template 3 pieces
two Fabric E/Template 4 pieces
two Fabric E/Template 4-reversed pieces
two Fabric E/Template 1-reversed pieces

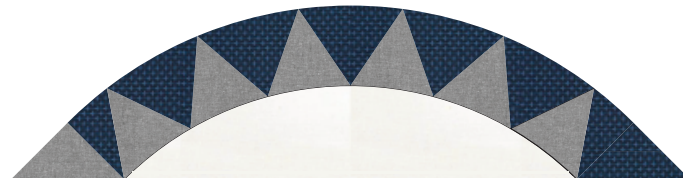
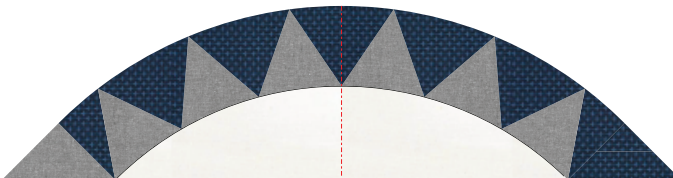
ten Fabric D/Template 3 pieces
two Fabric D/Template 4 pieces
two Fabric D/Template 4-reversed pieces
two Fabric D/Template 1-reversed pieces

Arrange the pieces, using the Block Assembly Diagram as a guide.

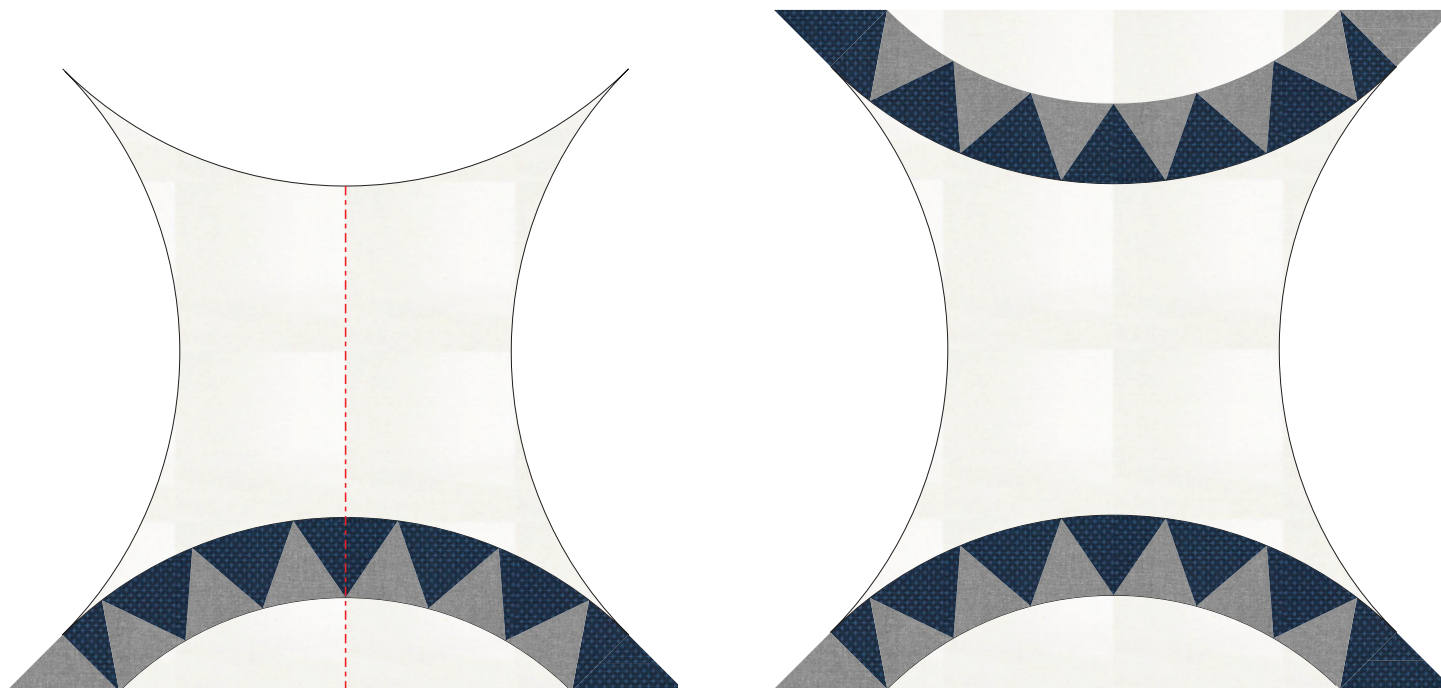
Step 2: Sew one arc of triangles (using pieces from Templates 1-4), offsetting the points as you sew each seam. Press the seams toward the darker fabric. Repeat to create all four arcs.



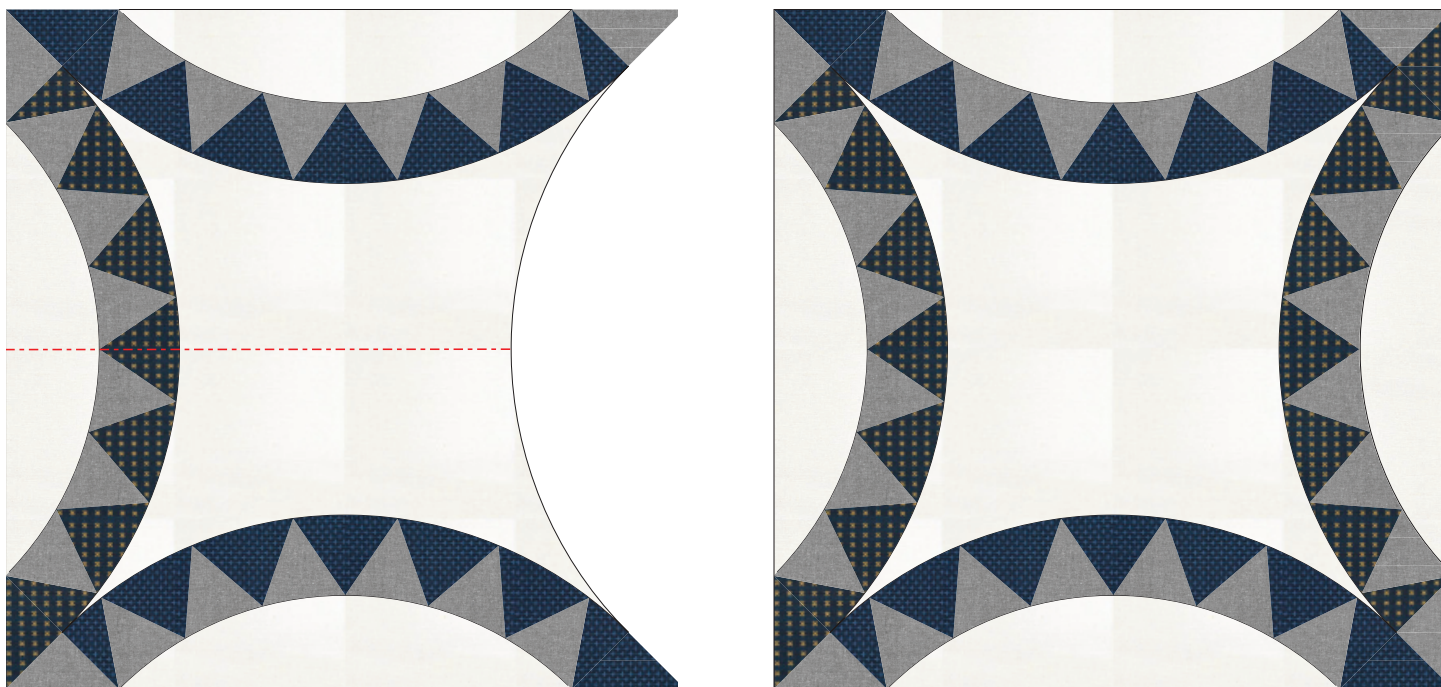
Step 3: Fold and press a crease at the center of the arc on each Fabric A/Template 5 piece. Pin this center point at the center seam of a pieced arc. Pin at each end, then at several points in between. Sew along the curve, then clip the seam and press to one side. Repeat for all pieced arc sections.



Step 4: Fold and press a crease at the center of each edge of the Fabric A/Template 6 piece. Fold and press a crease at the curved edge of each completed Step 3 unit. Pin this center point of Template 6 at the center seam of a pieced arc. Pin at each end (note: the seam between the last two triangles of the pieced arc is the point to match to the end point of Template 6), then at several points in between. Sew along the curve, then clip the seam and press to one side. Repeat for the opposite side, using a matching pieced arc.



Step 5: Fold a crease to find the center of the curve of a pieced curve unit. Place this piece along one remaining edge of the Template 6 piece and pin together at the center points. Pin at each end, then at several points in between. Sew along the curve, then clip the seam and press to one side. Repeat for the opposite side, using a matching pieced arc. The resulting block will measure 24-1/2" square.



Assemble Blocks 2-8

Step 6: Repeat Steps 1-5 to assemble the remaining blocks. Refer to the Block Assembly Diagrams for fabric placement.



Block 2: Uses Fabrics A, C, G and F



Block 3: Uses Fabrics A, B, O and H



Block 4: Uses Fabrics A, C, J and G



Block 5: Uses Fabrics A, B, L and I



Block 6: Uses Fabrics A, C, M and Q



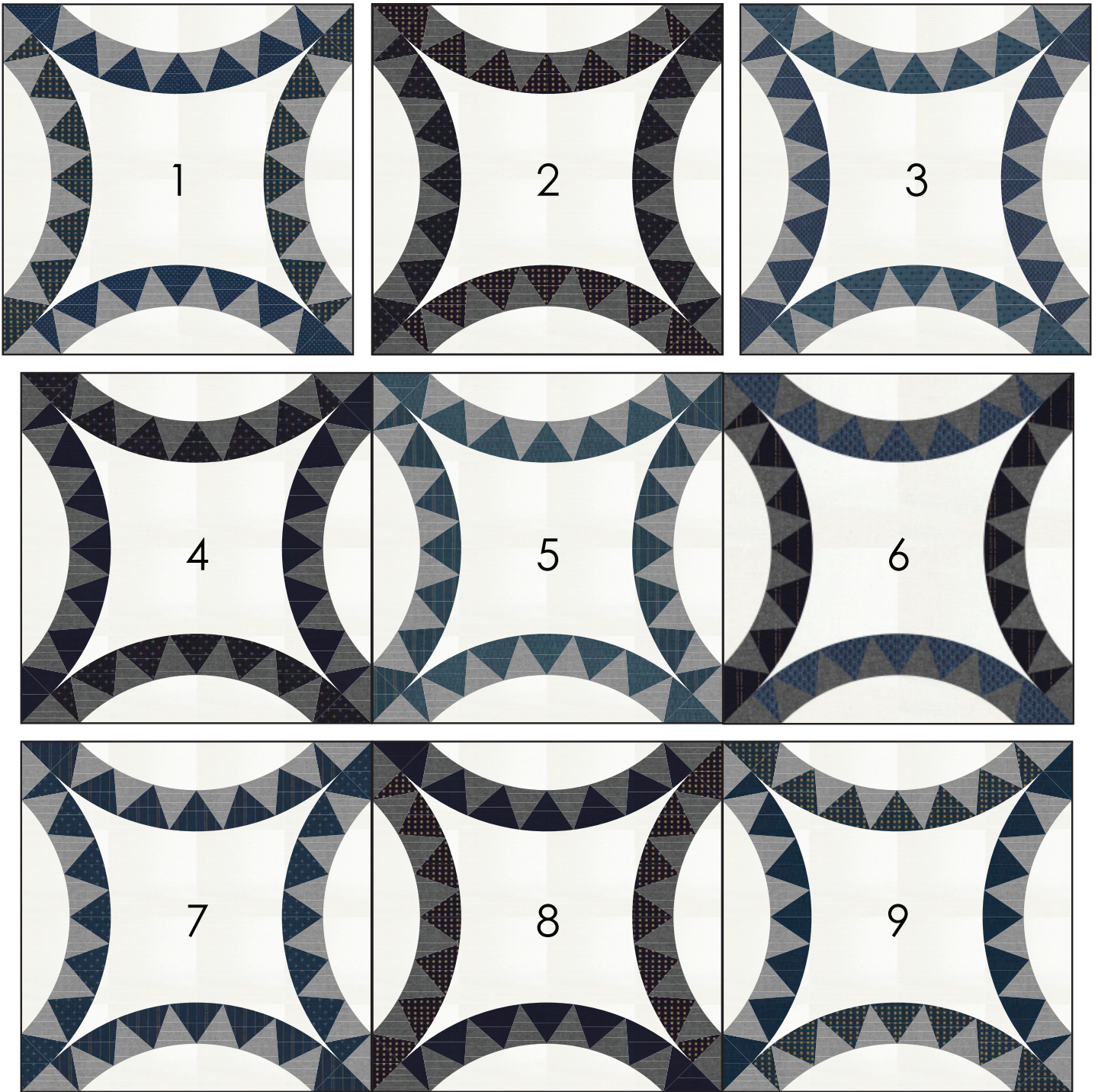
Block 7: Uses Fabrics A, B, K and N



Block 8: Uses Fabrics A, C, F and J



Block 9: Uses Fabrics A, B, P and D



Step 7: Arrange the blocks in three rows of three blocks each, placing by following the Quilt Assembly Diagram.

Step 8: Sew the blocks together to form rows, pressing the block seams to the left in the odd numbered units and to the right in the even numbered units.

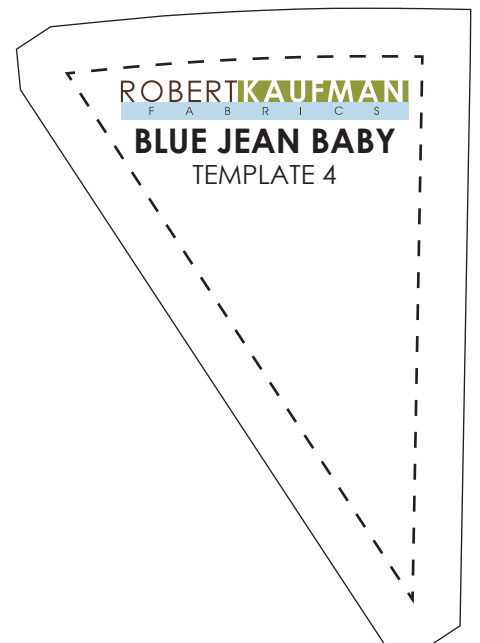
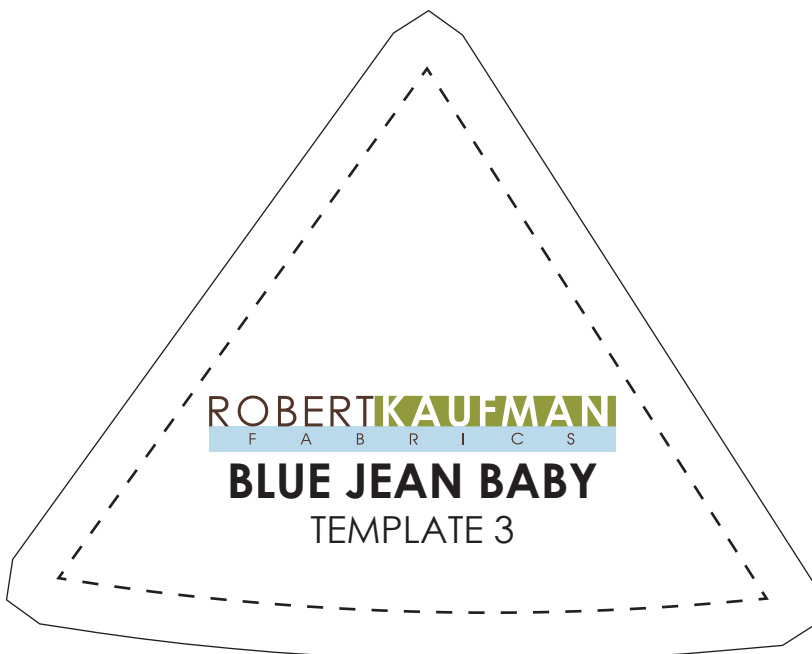
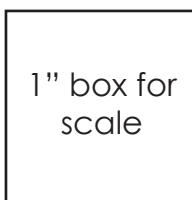
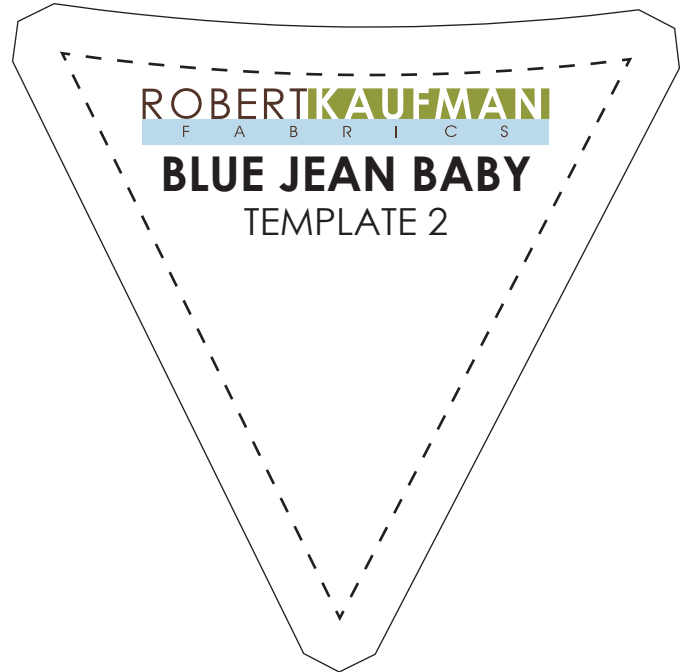
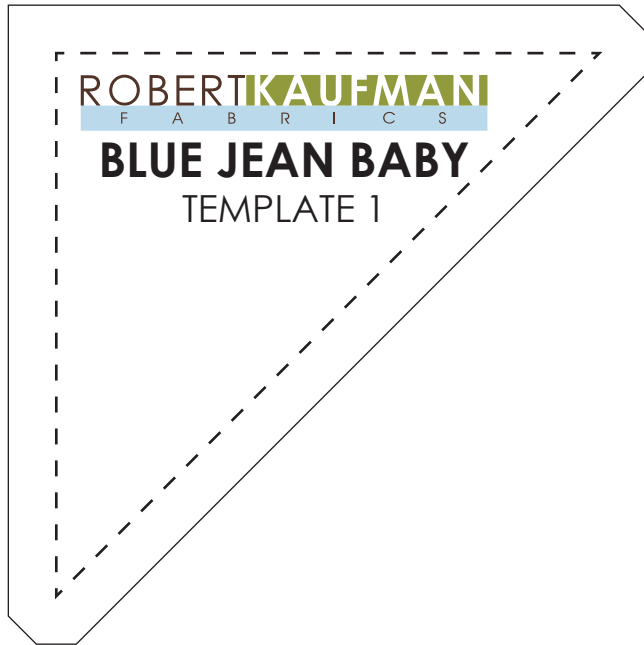
Step 9: Sew the rows together to form the quilt center, nesting the seams and pressing the row seams open or all in one direction.

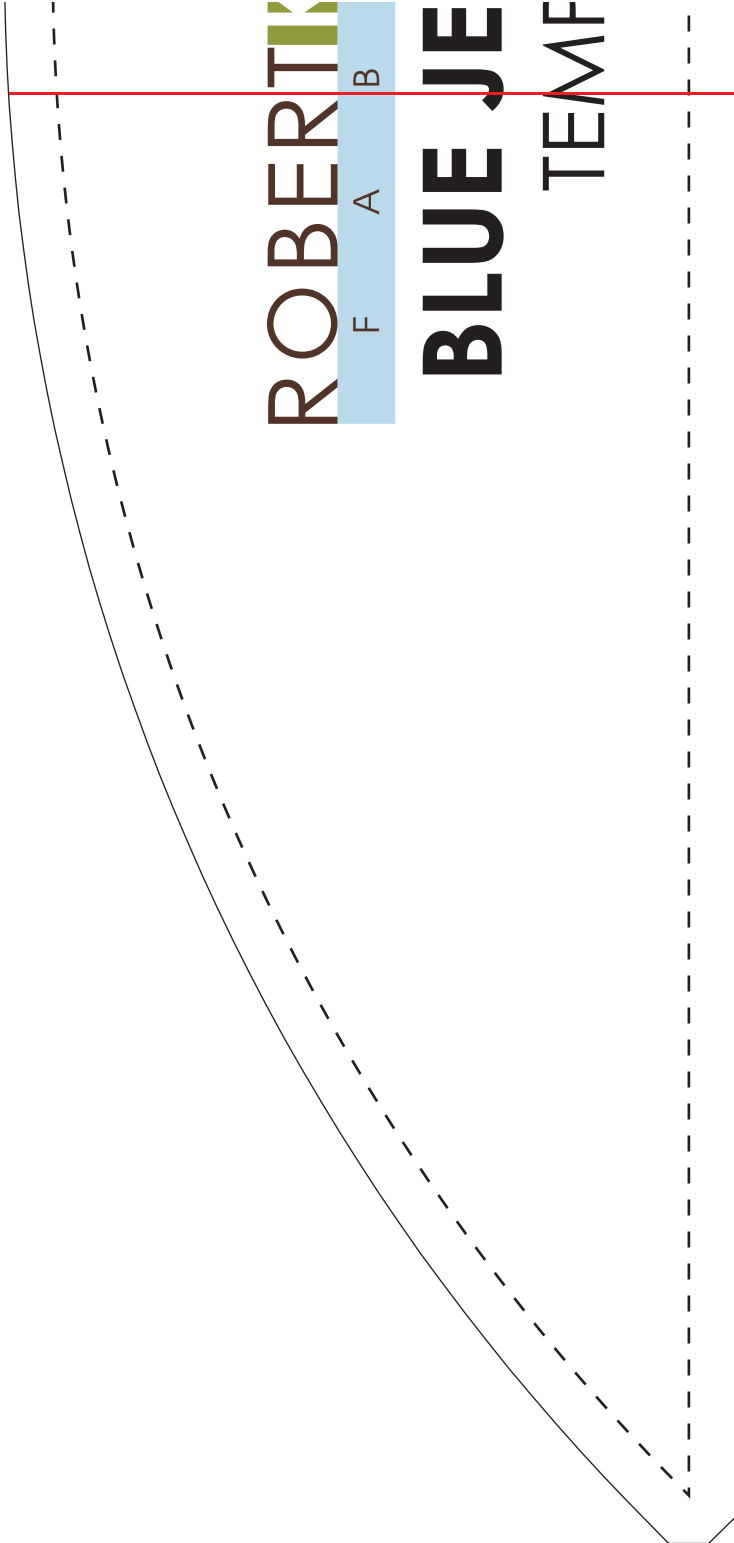
Your quilt top is complete! Baste, quilt, bind and enjoy!

Templates

Print at 100%.

Align template pieces for Template 5 (page 10) and Template 6 (pages 11-16) along red line and tape together.





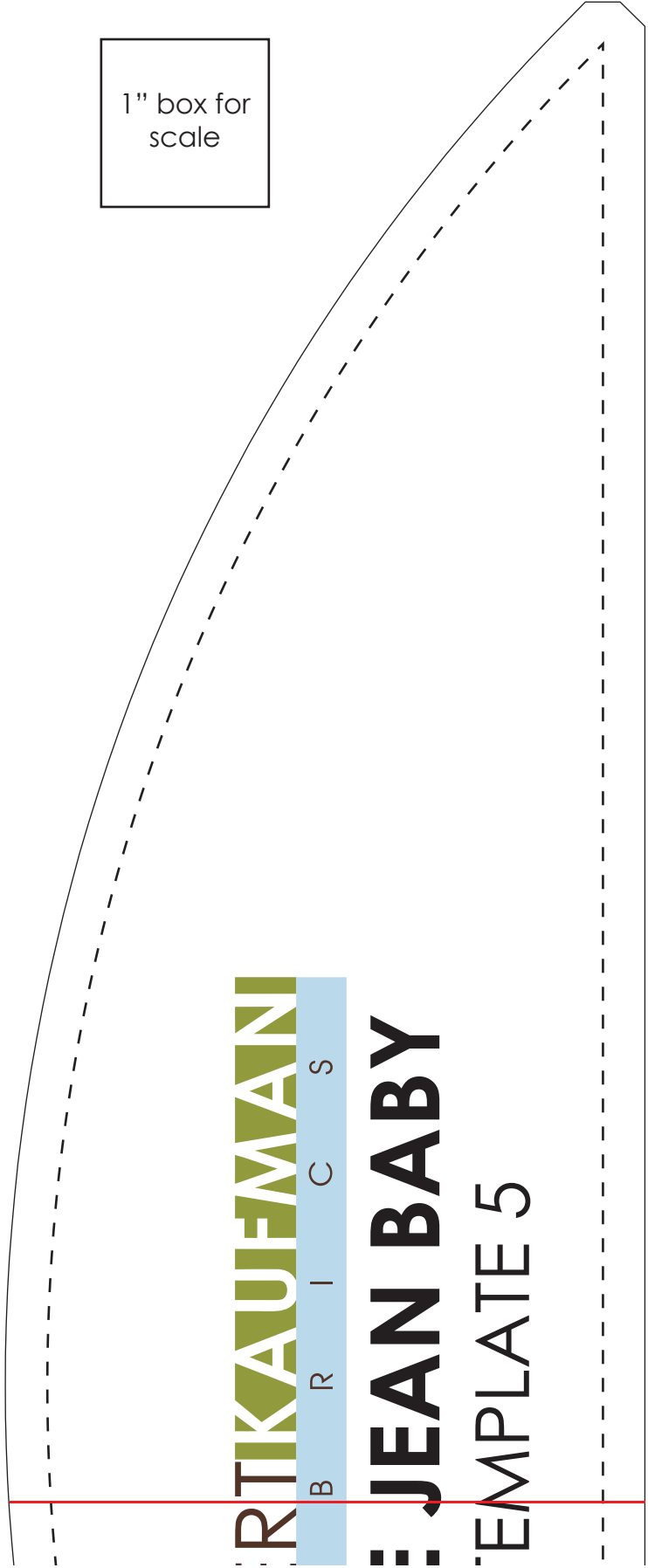
ROBERT

F A B

BLUE JEANS

TEMPLATE 5

1" box for scale



ROBERT

F A B

BLUE JEANS

TEMPLATE 5

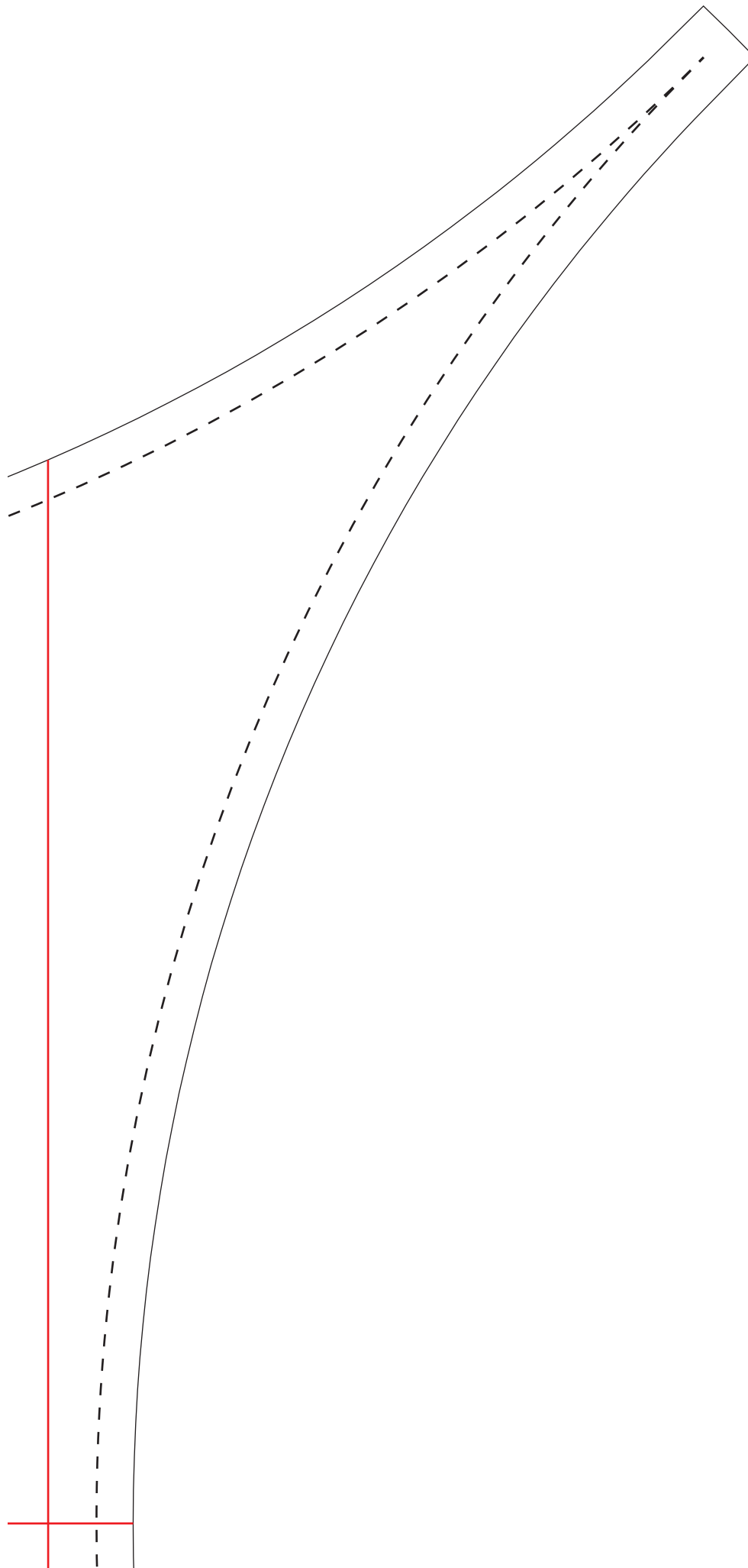
1" box for
scale

1" box for
scale

ROBERT KAUFMAN

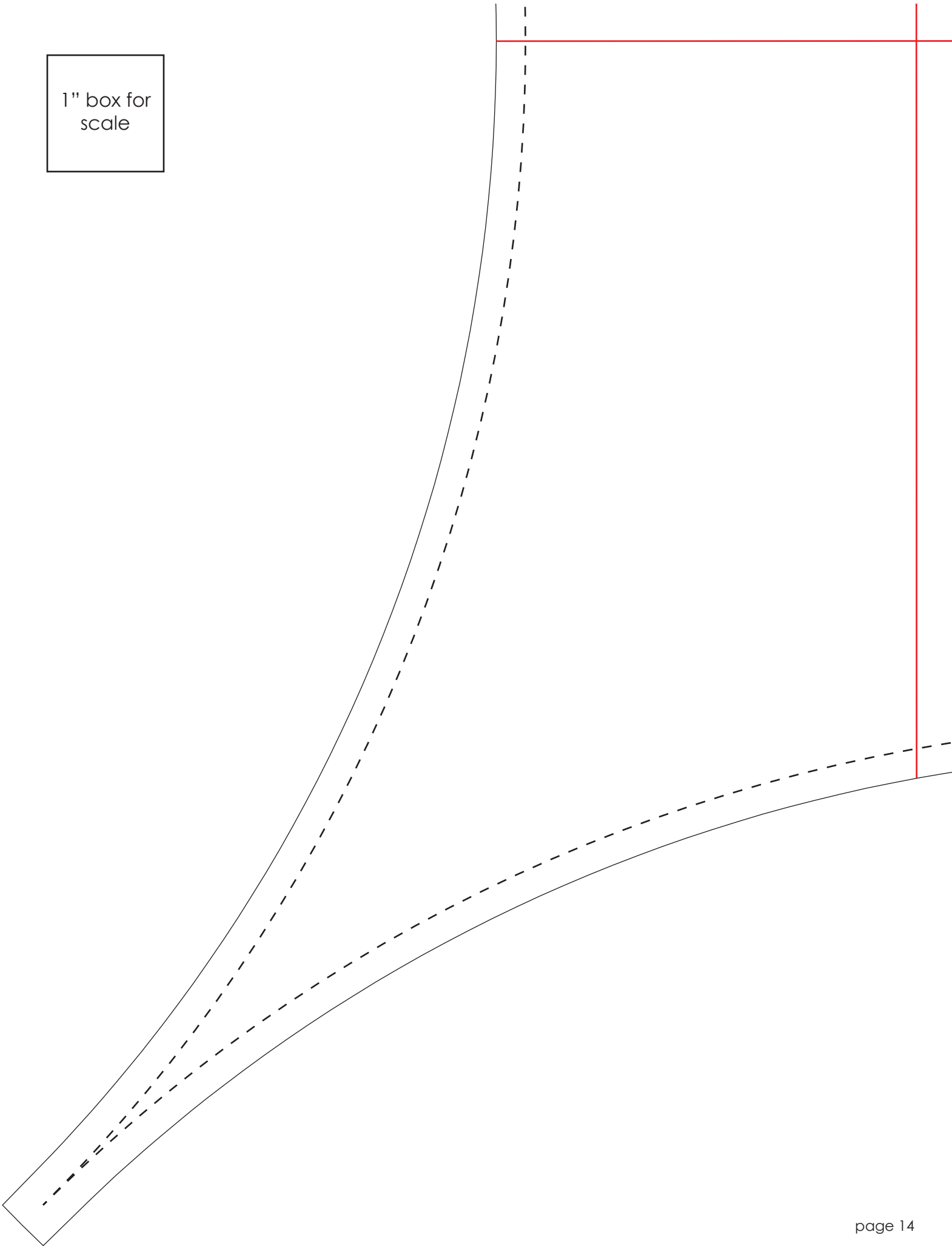
F A B R I C S

BLUE JEAN BABY



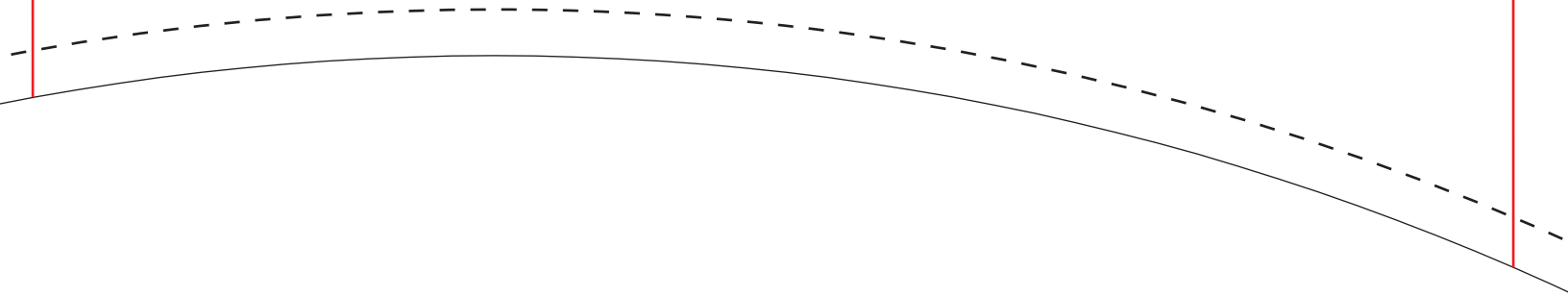
1" box for
scale

1" box for
scale



BLUE JEAN BABY

TEMPLATE 6



1" box for
scale

1" box for
scale

