

TIMELESS
TREASURES

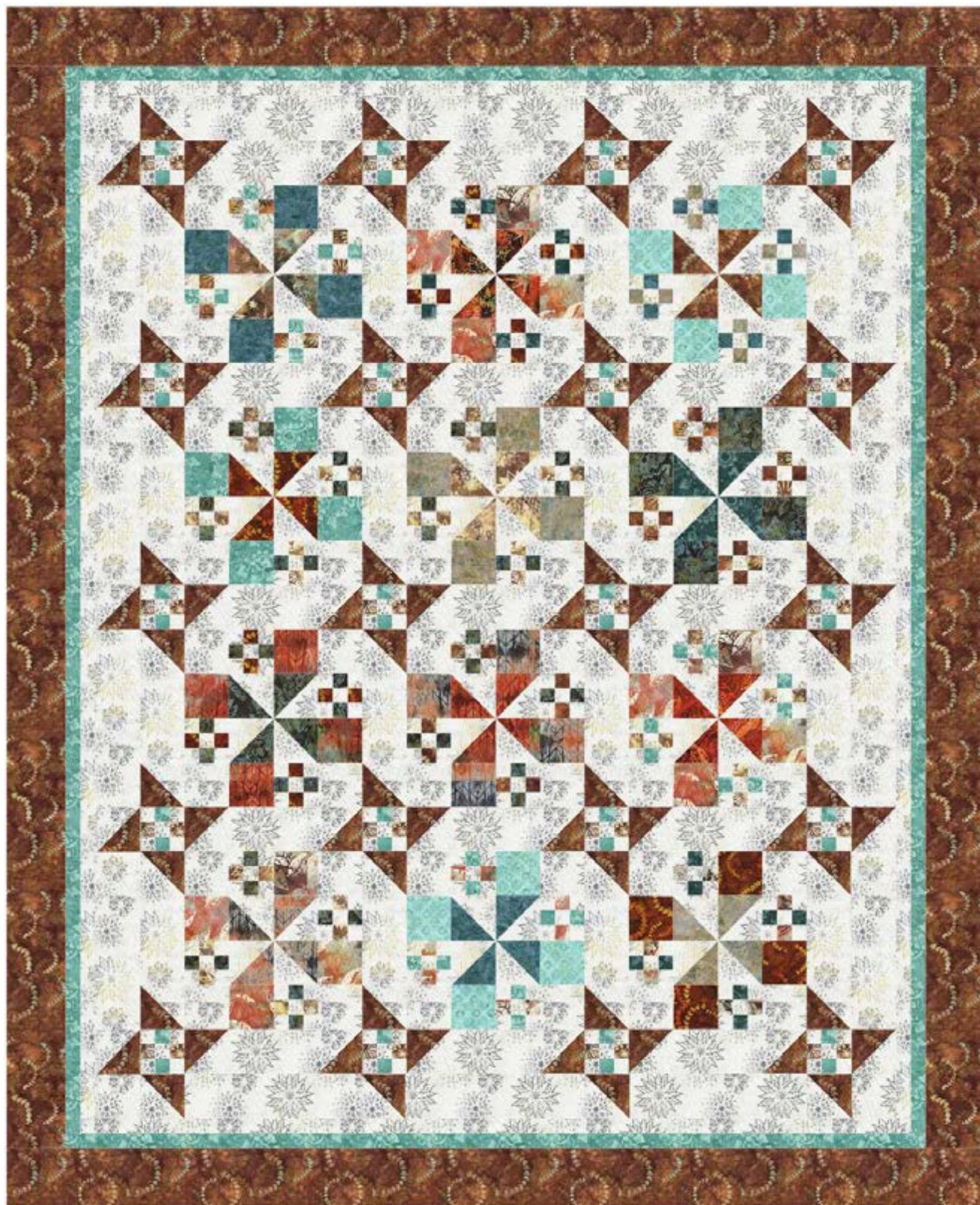
BROOME STREET PATTERNS



Tonga Copper

Star Studded Ladies

Designed by Leigh Headington



Finished quilt size: 66½" x 81½"
Finished block size: 12"

Fabric Requirements

2³/₈ yards Tonga-B4004 Ginger (includes binding)

2/3 yard Tonga-B4590 Water

3/8 yard Tonga-B4007 Marsh

1/4 yard each:

Tonga-B4442 Emerald

Tonga-B4590 Teal

Tonga-B4004 Leather

Tonga-B4391 Aspen

Tonga-B4590 Quarry

Tonga-B4399 Alpine

Tonga-B4001 Patina

Tonga-B4001 Poppy

Tonga-B3941 Surf

Tonga-B4015 Guava

Tonga-B4015 Carbon

Tonga-B4390 Red

1/8 yard each:

Tonga-B4591 Autumn

Tonga B4390 Copper

3 1/2 yards Tonga-B4007 Ice

5 yards Tonga-B4356 Bay (backing)

75" x 90" batting

Cutting

From Tonga-B4004 Ginger:

- Cut two 3⁷/₈" x width-of-fabric (WOF) strips; sub-cut eleven 3⁷/₈" squares.
- Cut six 3 1/2" x WOF strips; sub-cut sixty-two 3 1/2" squares.
- Cut one 1 1/2" x WOF strip.
- Cut eight 4 1/2" x WOF strips for outer border.
- Cut eight 2 1/4" x WOF strips for binding.

From Tonga-B4590 Water:

- Cut twelve 1 1/2" x WOF strips (eight for middle border).
- Cut one 3 1/2" x WOF strip; sub-cut four 3 1/2" squares.

From Tonga-B4007 Marsh:

- Cut five 1 1/2" x WOF strips.
- Cut one 3⁷/₈" x WOF strip; sub-cut two 3⁷/₈" squares.

From Tonga-B4399 Alpine:

- Cut one 3⁷/₈" x WOF strip; sub-cut two 3⁷/₈"

squares and four 3 1/2" squares.

- Cut three 1 1/2" x WOF strips.

From each Tonga-B4442 Emerald, Tonga-B4004 Leather and Tonga-B4590 Quarry:

- Cut one 3⁷/₈" x WOF strip; sub-cut two 3⁷/₈" squares and four 3 1/2" squares.
- Cut one 1 1/2" x WOF strip.

From both Tonga-B4591 Autumn and Tonga-B4390 Copper:

- Cut one 1 1/2" x WOF strip.

From each Tonga-B4001 Patina, Tonga-B4001 Poppy and Tonga-B4390 Red:

- Cut one 3⁷/₈" x WOF strip; sub-cut two 3⁷/₈" squares.

From Tonga-B4590 Teal:

- Cut one 1 1/2" x WOF strip.
- Cut one 3⁷/₈" x WOF strips; sub-cut two 3⁷/₈" squares.

From Tonga-B4391 Aspen:

- Cut one 1 1/2" x WOF strip.
- Cut one 3 1/2" x WOF strip; sub-cut twelve 3 1/2" squares.

From Tonga-B3941 Surf:

- Cut one 3 1/2" x WOF strip; sub-cut eight 3 1/2" squares.

From both Tonga-B4015 Guava and Tonga-4015 Carbon:

- Cut one 3⁷/₈" x WOF strip; sub-cut two 3⁷/₈" squares and four 3 1/2" squares.

From Tonga-B4007 Ice:

- Cut four 3⁷/₈" x WOF strips; sub-cut thirty-three 3⁷/₈" squares.
- Cut twenty 3 1/2" x WOF strips; sub-cut fifty two 3 1/2" squares and forty-five 3 1/2" x 12 1/2" strips for sashing/borders.
- Cut twenty-two 1 1/2" x WOF strips (seven for inner border).

Block Construction

Seam allowances are 1/4".

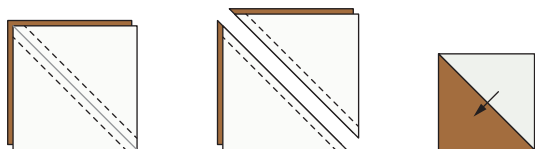
Half-square Triangle Units

1. Draw a diagonal line on the wrong side of each 3⁷/₈" B4007 Ice square. Layer one B4007 Ice square right



Imagination... Passion... Creativity

sides together with a $3\frac{7}{8}$ " B4004 Ginger square. Sew a scant $\frac{1}{4}$ " on each side of the drawn line and cut the triangles apart on the drawn line to make two half-square triangle (HST) units. Press the seam allowances toward the darker fabric. (figure 1)
Fig. 1



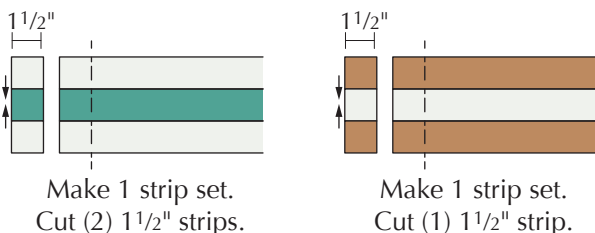
Half-square Triangle unit
Make 66.

- Repeat step 1 using the remaining thirty-two $3\frac{7}{8}$ " B4007 Ice squares and thirty-two $3\frac{7}{8}$ " colored squares to make a total of sixty-six HST units. Set aside eighteen Ginger/Ice blocks for the borders.

Sashing 9-Patch Units

- Sew a $1\frac{1}{2}$ " x WOF B4007 Ice strip on each side of a $1\frac{1}{2}$ " x WOF B4490 Water strip. Press the seams toward the darker fabric. Cross-cut two $1\frac{1}{2}$ " x 3 " strips.
- Repeat step 3 using two $1\frac{1}{2}$ " x WOF B4007 Marsh strips and one $1\frac{1}{2}$ " x WOF B4007 Ice fabric. Cross-cut one $1\frac{1}{2}$ " x $3\frac{1}{2}$ " strip. (figure 2)

Fig. 2



Make 1 strip set.
Cut (2) $1\frac{1}{2}$ " strips.

Make 1 strip set.
Cut (1) $1\frac{1}{2}$ " strip.

- Sew together the three $1\frac{1}{2}$ " x $3\frac{1}{2}$ " pieced rows in order to complete one unit. (figure 3)

Fig. 3



Sashing Nine-Patch unit
Make 20.

- Using a total of five B4007 Ice strips, two B4590 Water and two B4007 Marsh strips, make a total of twenty Sashing 9-Patch units, each measuring $3\frac{1}{2}$ " square.

Block 9-Patch Units

Note: Each block needs four matching 9-Patch units. Mix and match the colors as desired.

- To make four sets of matching 9-Patch units, cut the following lengths from the $1\frac{1}{2}$ " x WOF strips:

Color 1: cut one strip $1\frac{1}{2}$ " x 14 "

Color 2: cut two strips $1\frac{1}{2}$ " x 7 "

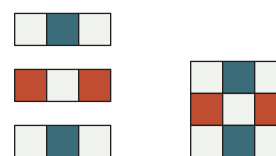
B4007 Ice (background): cut one strip, $1\frac{1}{2}$ " x 7 " and two strips $1\frac{1}{2}$ " x 14 "

- Sew a $1\frac{1}{2}$ " x 14 " B4007 Ice strip to each side of a $1\frac{1}{2}$ " x 14 " Color 1 strip. Cross-cut eight $1\frac{1}{2}$ " x $3\frac{1}{2}$ " strips. Press seam allowances toward the darker fabric.
- Sew one $1\frac{1}{2}$ " x 7 " B4007 Ice strip between two $1\frac{1}{2}$ " x 7 " Color 2 strips. Cross-cut four $1\frac{1}{2}$ " x $3\frac{1}{2}$ " strips. Press seams toward the darker fabric.

- Referring to Figure 4, sew the rows together in order.

Fig. 4

Make a total of twelve sets of four matching block units. (figure 4)

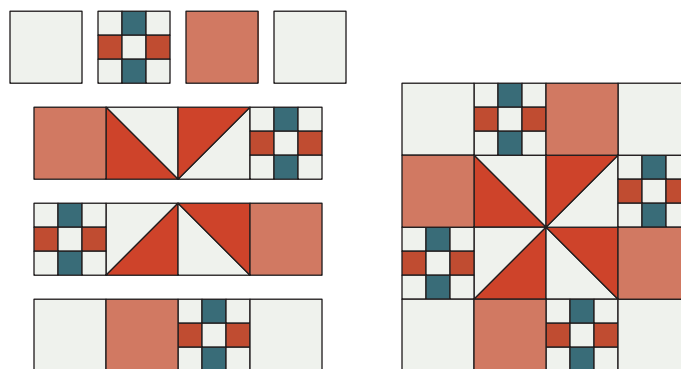


Block Nine-Patch unit
Make 12 sets of 4 matching.

Block Assembly

- Lay out four $3\frac{1}{2}$ " B4007 Ice squares, four $3\frac{1}{2}$ " matching colored squares, four matching HST units and four matching 9-Patch units to form the pinwheel block as shown. (figure 5)

Fig. 5



Pinwheel Block
Make 12.

12. Sew the blocks together in each row, and sew the rows together, pressing the seam allowances of adjacent rows in alternating directions. Make a total of twelve blocks.

Sashing Assembly

13. Draw a diagonal line on the wrong side of sixty-two 3½" B4004 Ginger squares.

14. With right sides together, and noting the line direction, place one marked square on each end of a 3½" x 12½" B4007 Ice strip. Sew on the marked line, trim the seam allowances to ¼" and press out the resulting triangles. (figure 6)

Fig. 6



Pieced Sashing unit

Make 31.

15. Repeat to make a total of thirty-one pieced sashing units.

Quilt Top Assembly

16. Following the Quilt Assembly Diagram, lay out the units as shown.

17. Sew together the units within each row, pressing seams in alternating directions on adjacent rows. Sew the rows together in order and press seams in one direction.

18. For each side inner border, sew together two 1½" x WOF B4007 Ice strips end to end using diagonal seams. For the inner top/bottom borders, sew together three 1½" x WOF B4007 Ice strips end to end using diagonal seams; cut in half to create a top and bottom border.

19. For the middle border, sew together two 1½" x WOF B4590 Water strips end to end using diagonal seams. Make a total of four.

20. For the outer border, sew together two 4½" x WOF B4004 Ginger strips end to end using diagonal seams. Make a total of four.

21. Sew the side inner border to the quilt, trimming excess length. Press the seam allowances toward

the border. Repeat to add the top and bottom inner borders.

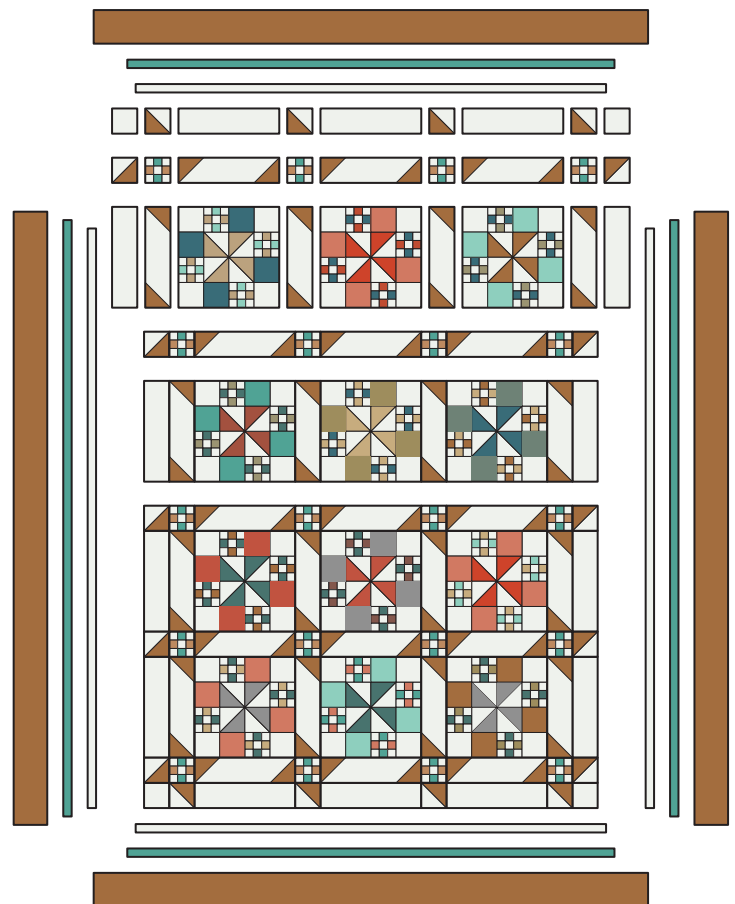
22. Following step 21, add each successive border set, trimming to length after each addition.

Finishing

23. Layer the quilt top, batting and backing and quilt as desired.

24. Stitch the binding strips together end to end using diagonal seams. Fold and press the resulting long strip in half lengthwise with wrong sides together. Stitch to the quilt front, matching raw edges and mitering the corners.

25. Fold the binding to the quilt underside and hand-stitch the folded edge to the quilt back.



Quilt Assembly Diagram

Leigh Headington

www.sweetteagirls.com

©2016 Timeless Treasures www.tffabrics.com

This pattern is for individual home use only. This pattern may not be reproduced for commercial purposes (i.e., may not be sold).



Imagination... Passion... Creativity